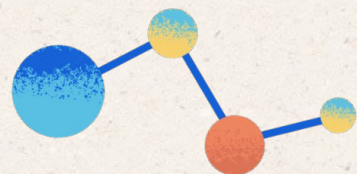


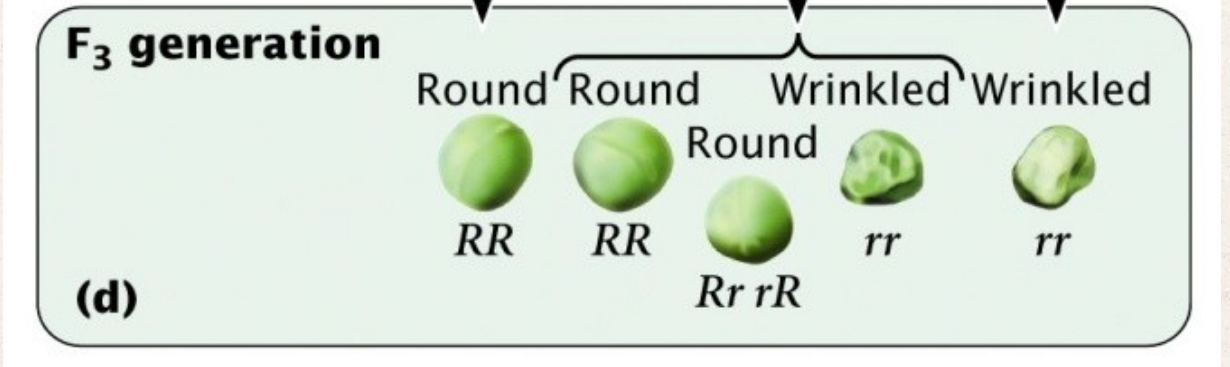
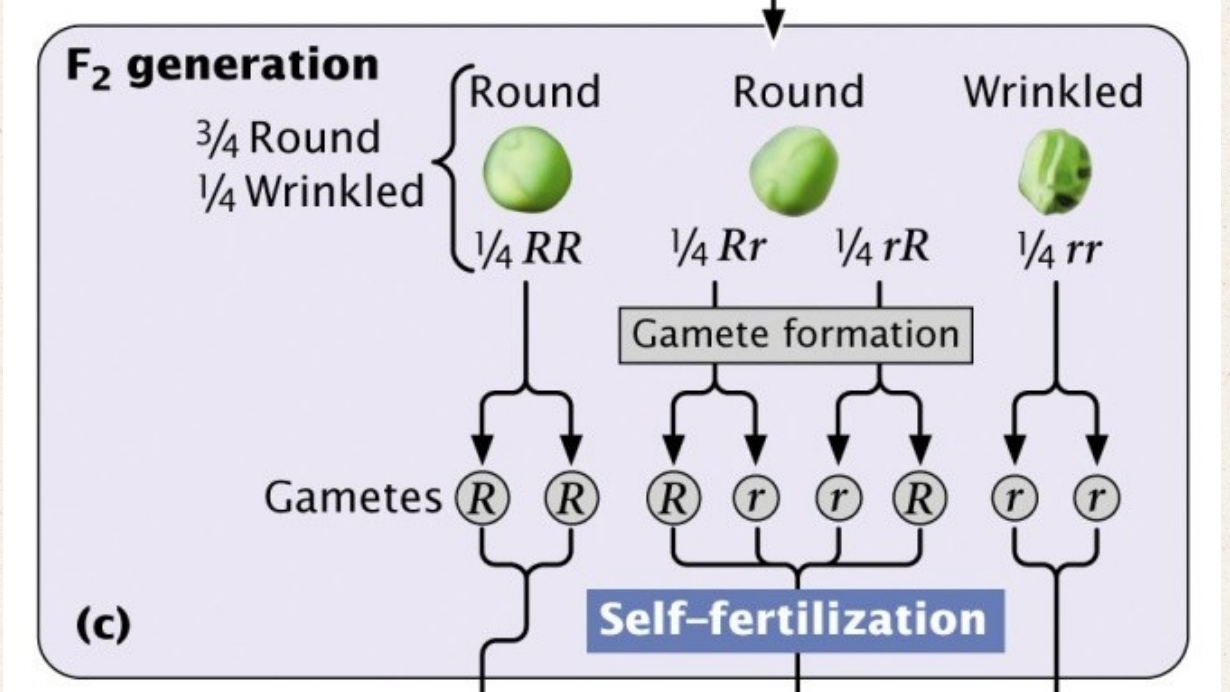
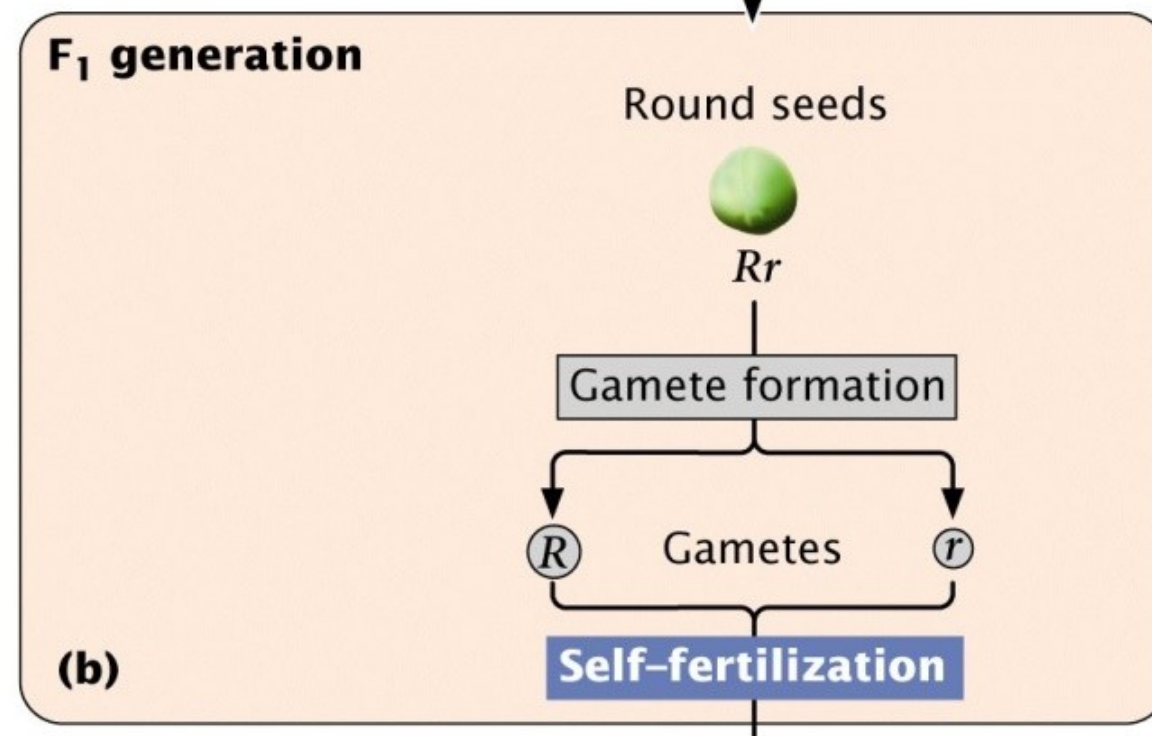
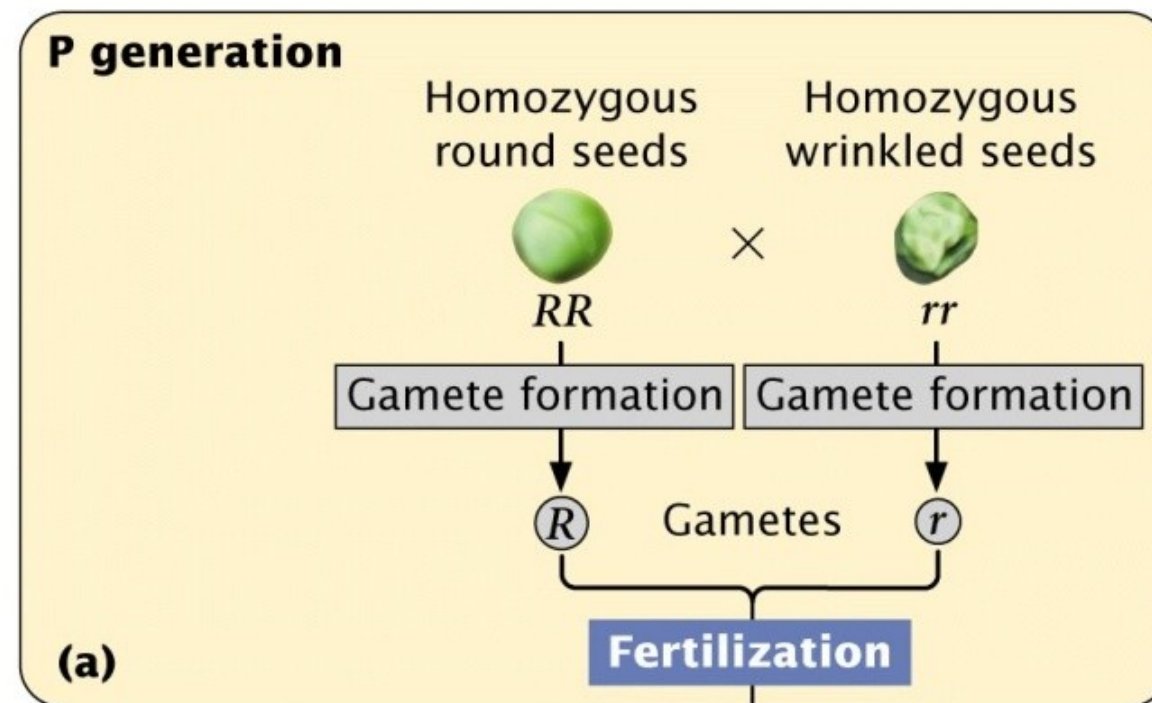
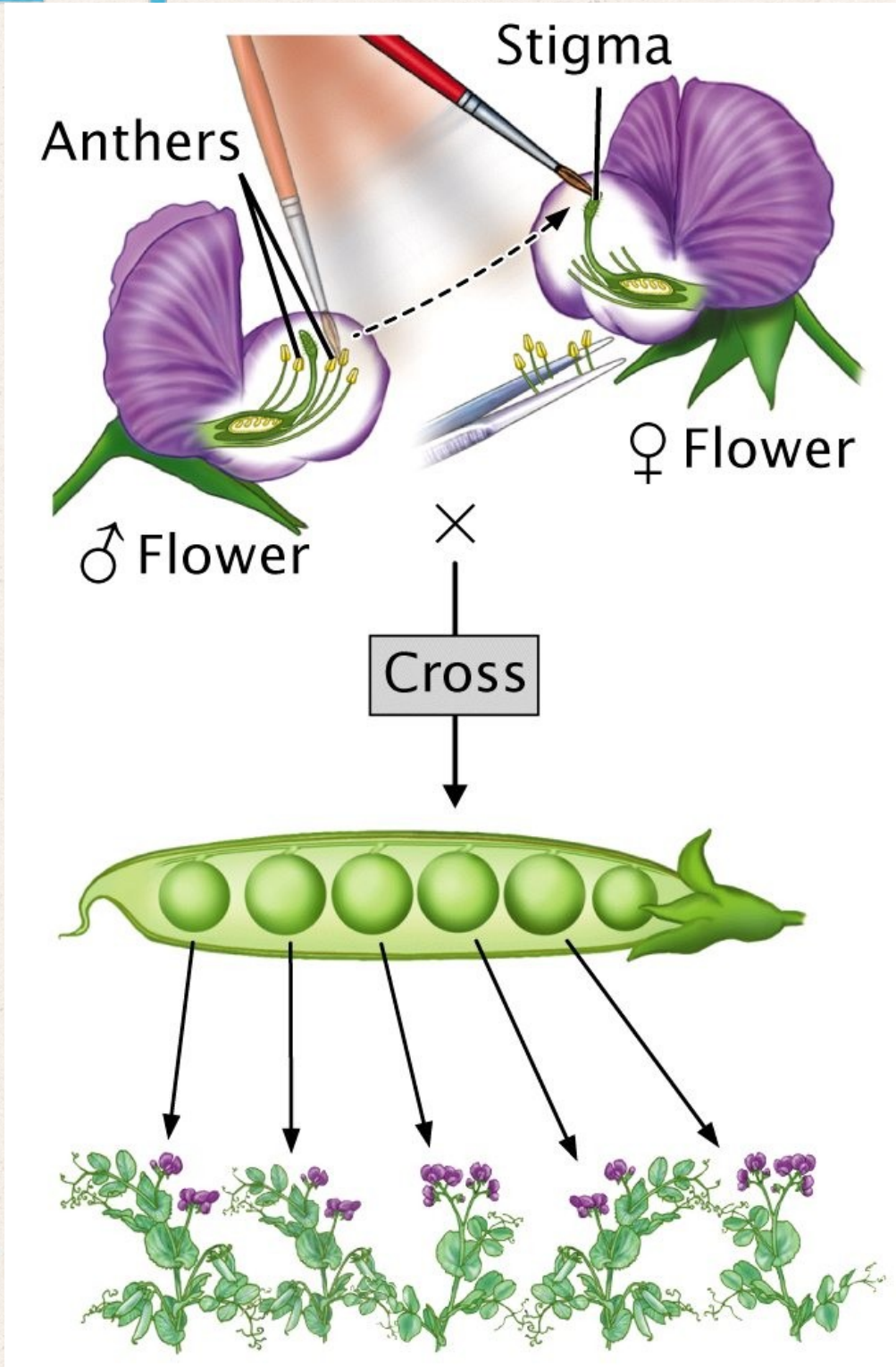


# Les lleis de Mendel

Biologia i geologia. 4ESO  
Prof. Gregori Moreno i  
Marta Massana



# Els creuaments

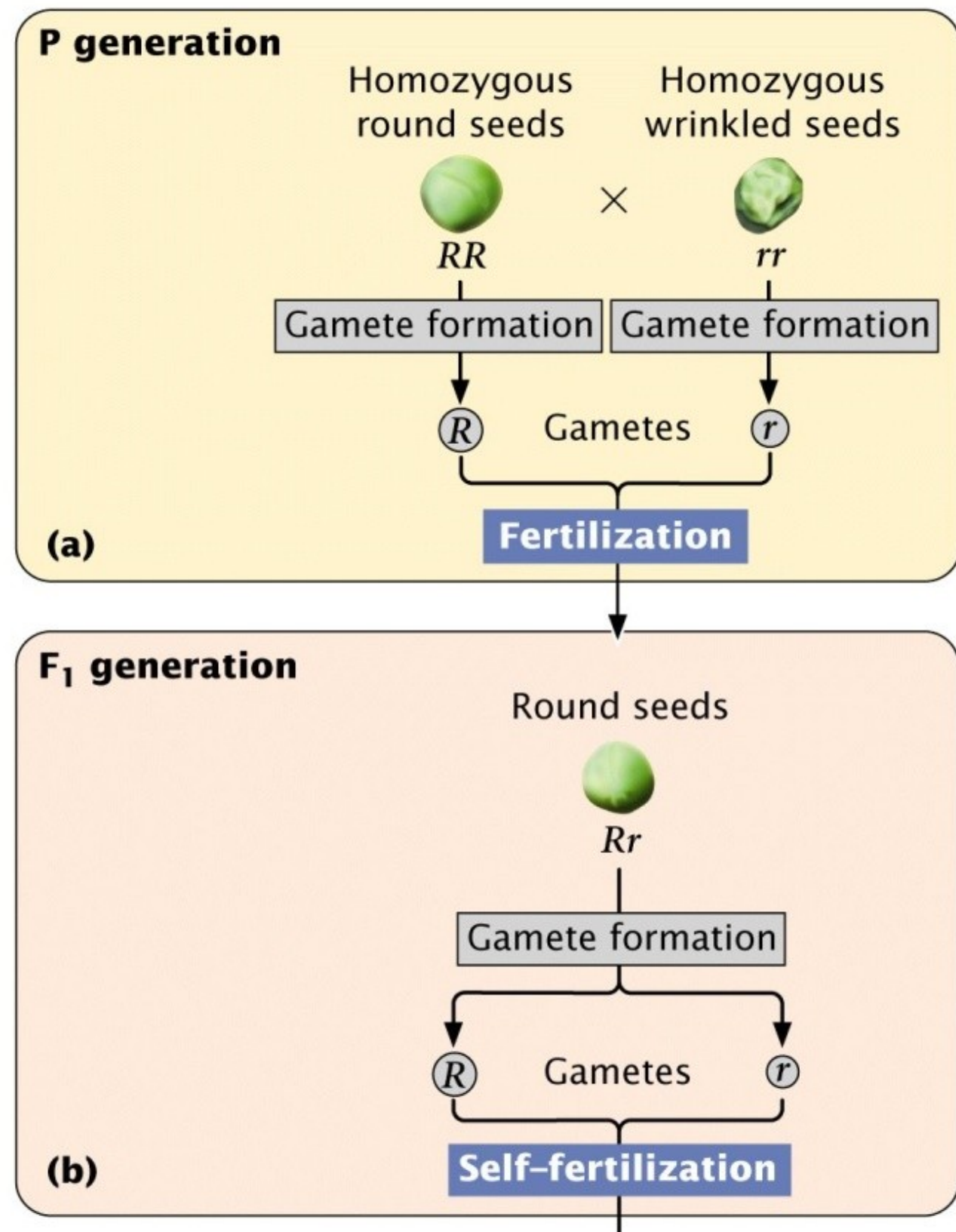


D'aquests creuaments en surten la primera i la segona llei de Mendel

# 1a Llei

## Primera llei de Mendel: Llei de la uniformitat en la primera generació

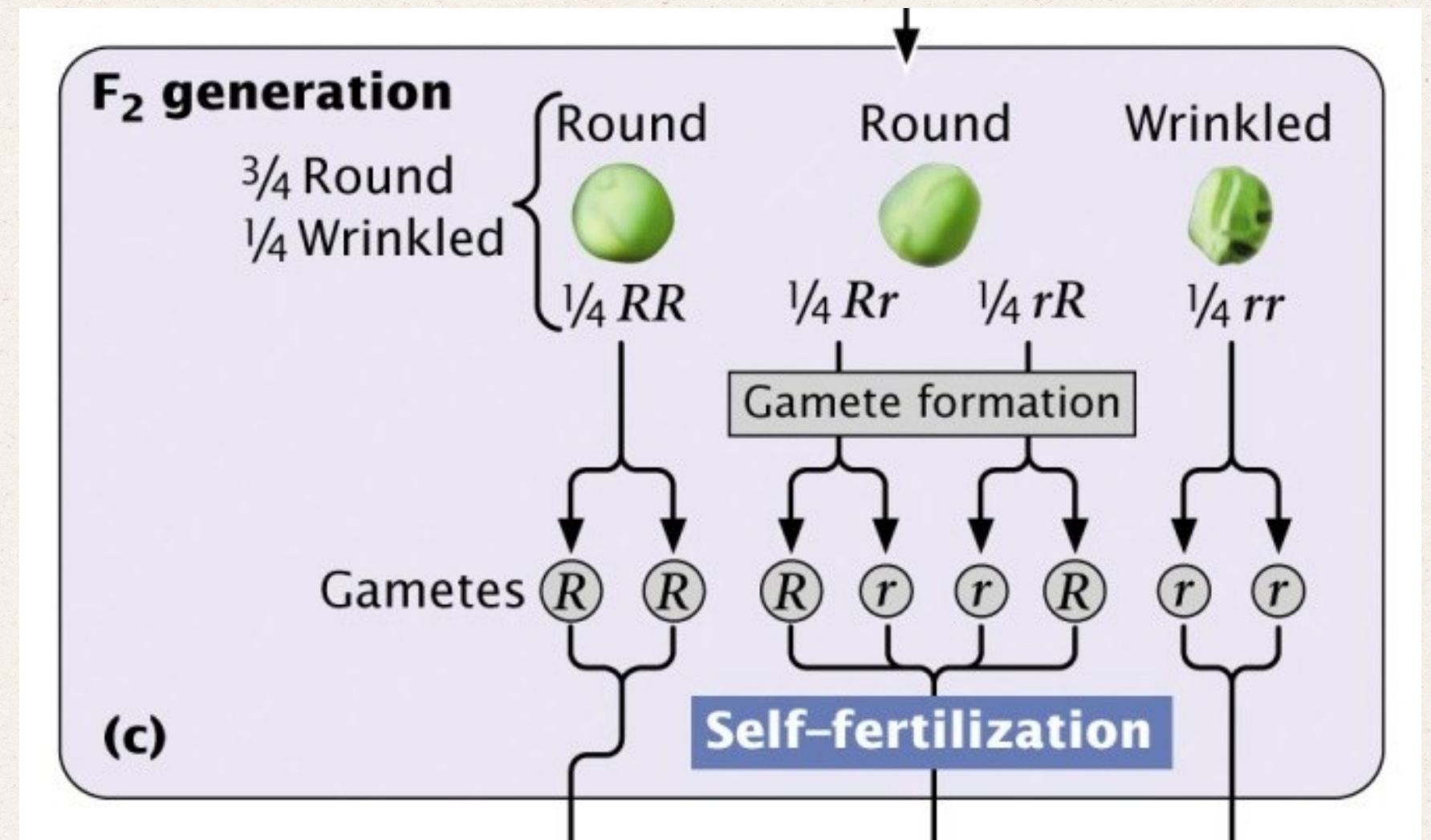
Les plantes híbrides ( $Rr$ ) de la  $F_1$ , obtingudes de dues línies pures que difereixen en un sol caràcter, són idèntiques entre si i s'assemblen a una de les plantes parentals. El caràcter que es manifesta serà el dominant i el que no ho fa serà el recessiu. Aquest resultat és independent de la direcció del creuament.



# 2a llei

## Segona llei de Mendel: Segregació dels caràcters en la segona generació

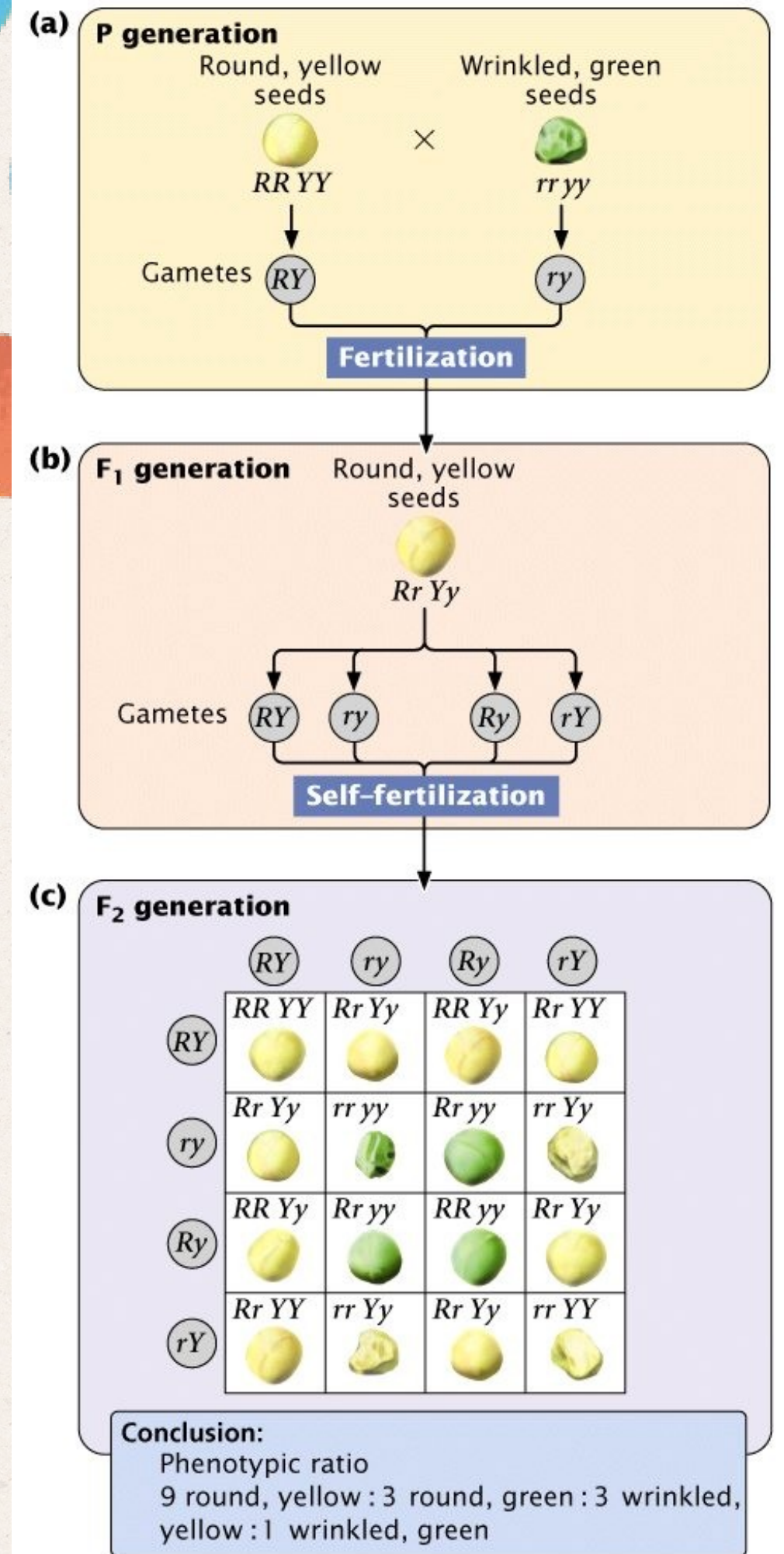
L'autofecundació de les plantes híbrides ( $Rr$ ) origina una  $F_2$  on  $\frac{3}{4}$  part de les plantes presenten el fenotip dominant i  $\frac{1}{4}$  part el recessiu.

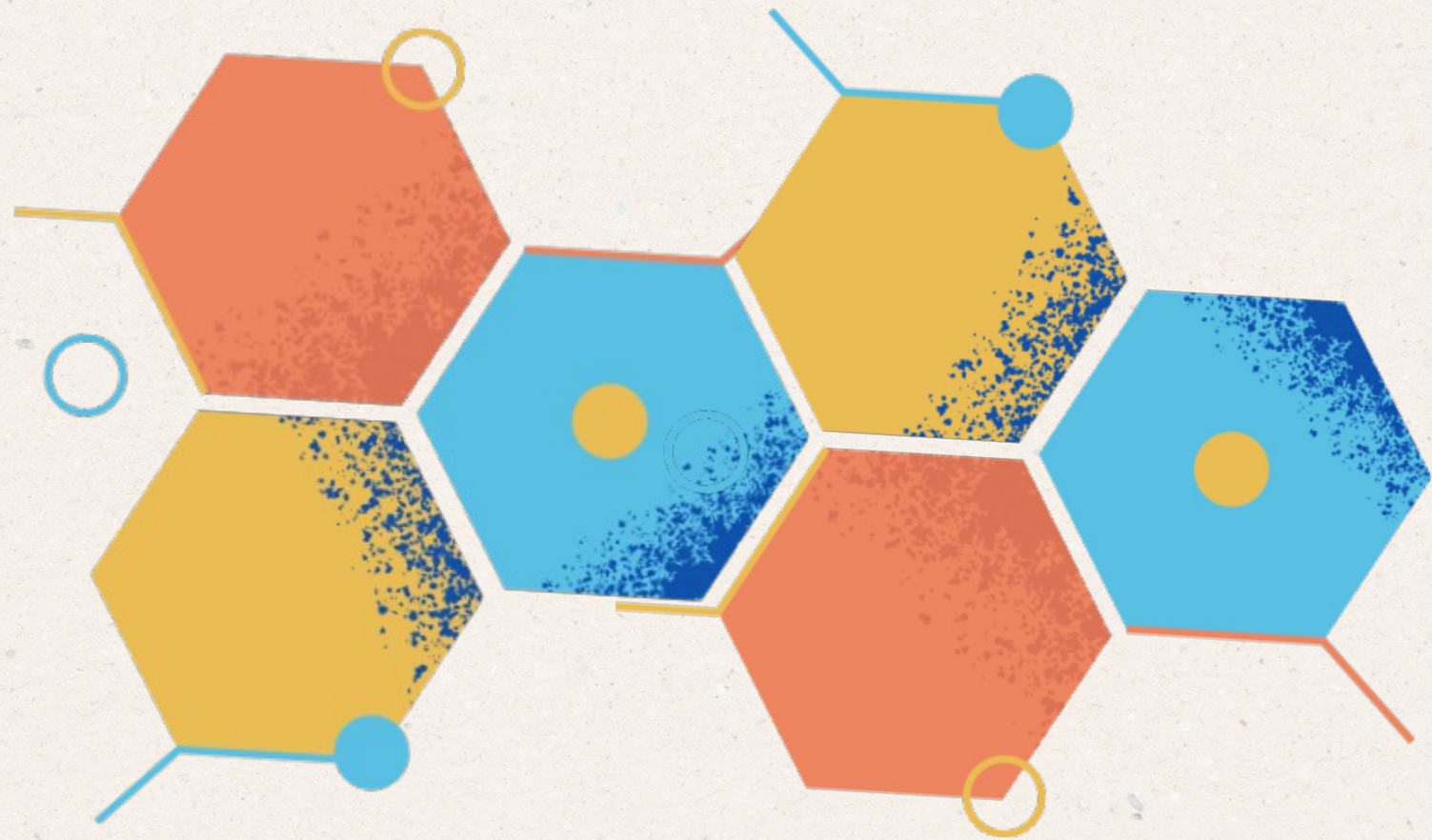


# 3<sup>a</sup> llei

## Tercera llei de Mendel: Llei de la independència dels caràcters hereditaris

En un heterozigot ( $RrYy$ ) els al·lels del locus  $R$ ,  $r$  i els del locus  $Y$ ,  $y$  es combinen de manera independent format quatre gàmetes en igual proporció. Obtenint una proporció de fenotips 9:3:3:1.





## 04 MOLECULES

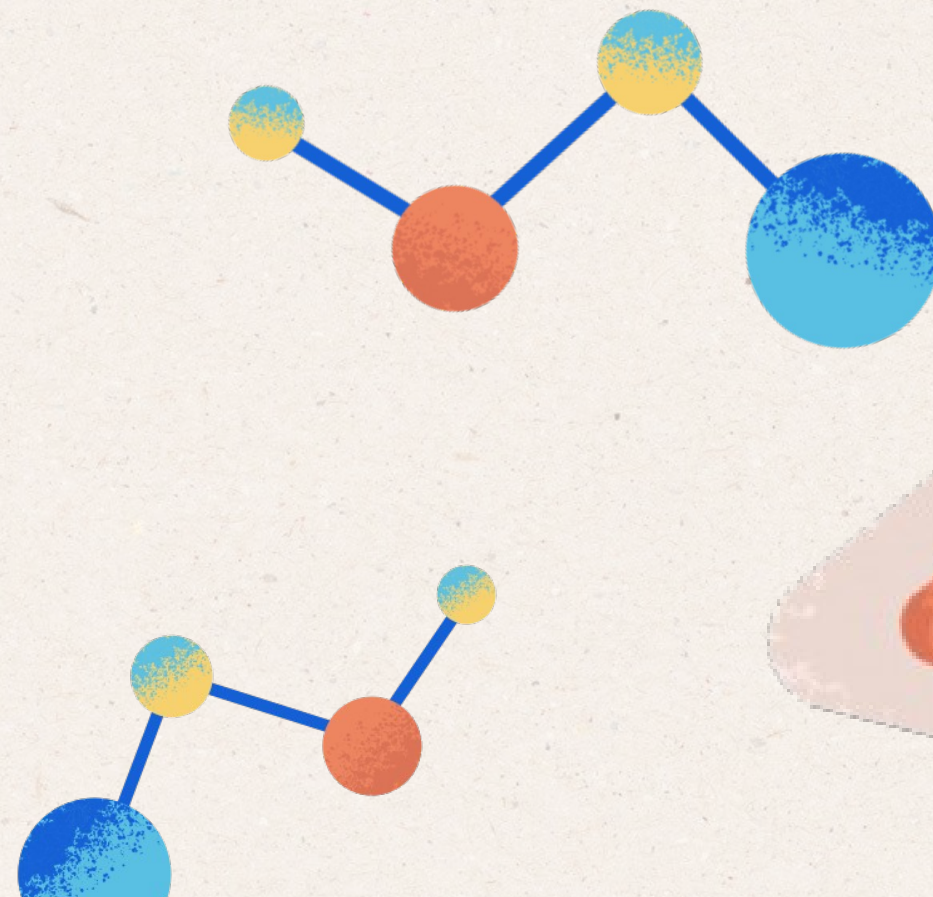
Tercera llei de Mendel: Llei de la independència dels caràcters hereditaris

Un cop fets els estudis que hem explicat, Mendel va començar a realitzar creuaments entre línies pures que diferien en dos caràcters.

Decidí estudiar els caràcters que es manifestaven a les llavors, com el color i la forma, creuant plantes que

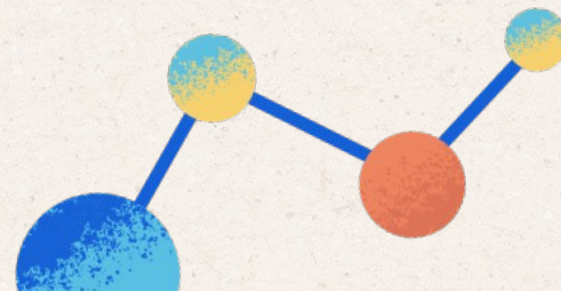
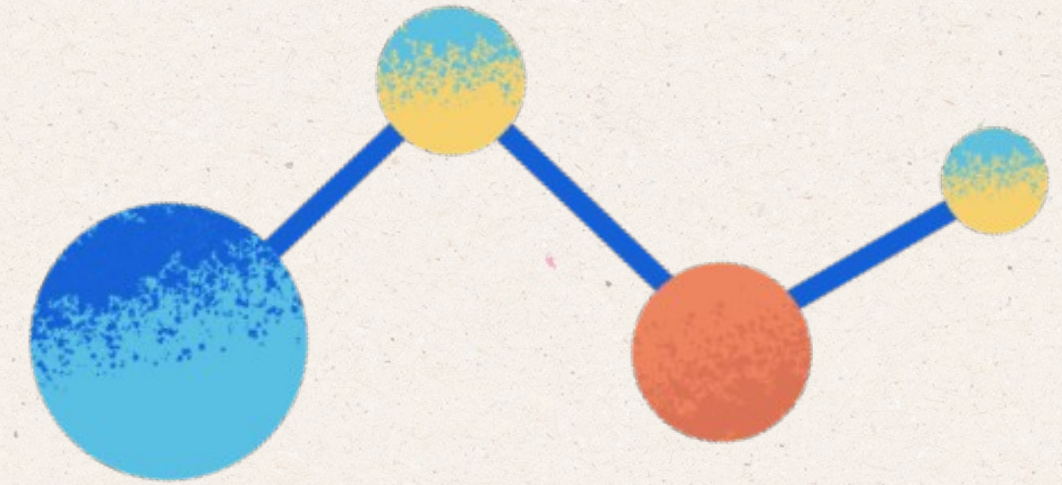
## 03 LAB RULES

Lorem ipsum dolor sit amet, consectetur adipiscing elit, sed do eiusmod tempor incididunt ut labore et dolore magna aliqua. Ut enim ad minim veniam, quis nostrud exercitation ullamco laboris nisi ut aliquip ex ea commodo consequat.



02

# OBJECTIVES



The background is a light beige, textured surface. It is decorated with several abstract patterns of colored circles (blue, yellow, orange) connected by thin, light blue lines, resembling a molecular or network structure. These patterns are located in the corners and along the sides of the page.

# GOALS

Lorem ipsum dolor sit amet, consectetur adipiscing elit, sed do eiusmod tempor incididunt ut labore et dolore magna aliqua. Ut enim ad minim veniam, quis nostrud exercitation ullamco laboris nisi ut aliquip ex ea commodo consequat.



# PROJECT RULES

## BASIC RULES

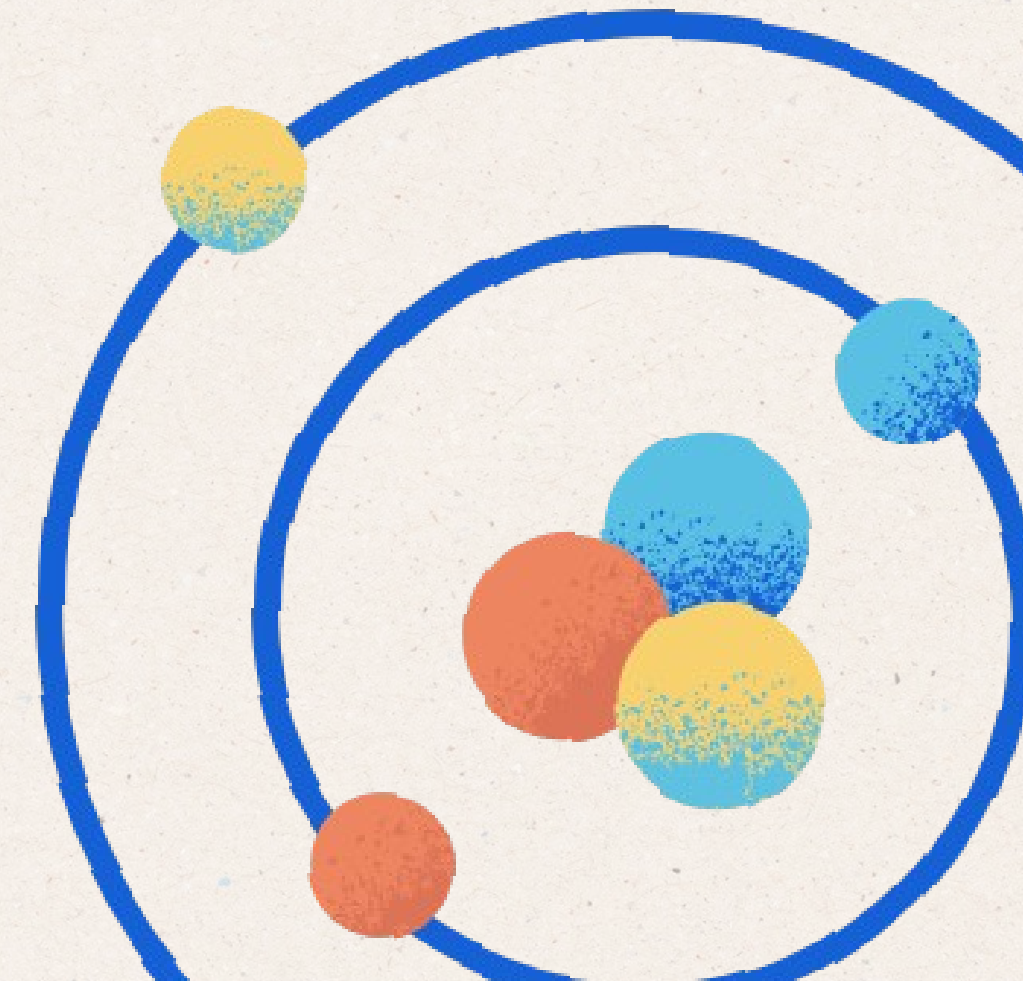
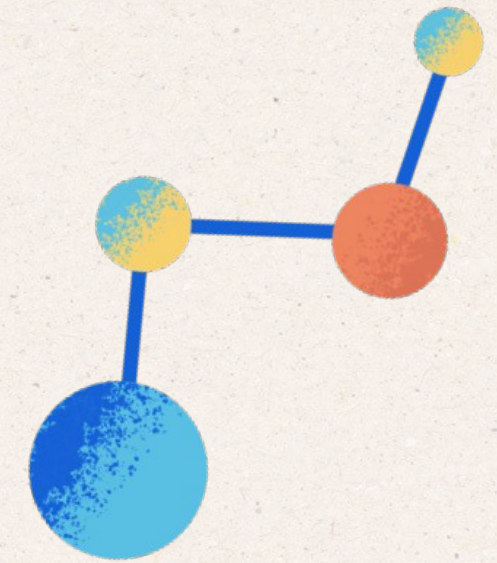
Lorem ipsum dolor sit amet, consectetur adipiscing elit, sed do eiusmod tempor incididunt ut labore et dolore magna aliqua. Ut enim ad minim veniam, quis nostrud exercitation ullamco laboris nisi ut aliquip ex ea commodo consequat.

## POSSIBLE INCIDENTS

Lorem ipsum dolor sit amet, consectetur adipiscing elit, sed do eiusmod tempor incididunt ut labore et dolore magna aliqua. Ut enim ad minim veniam, quis nostrud exercitation ullamco laboris nisi ut aliquip ex ea commodo consequat.

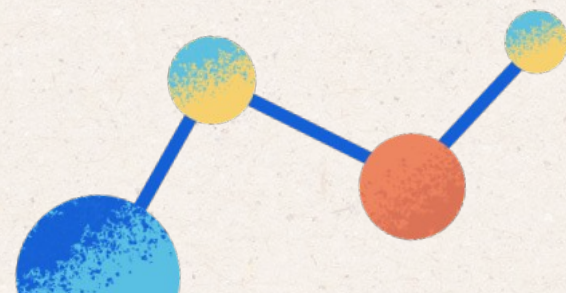
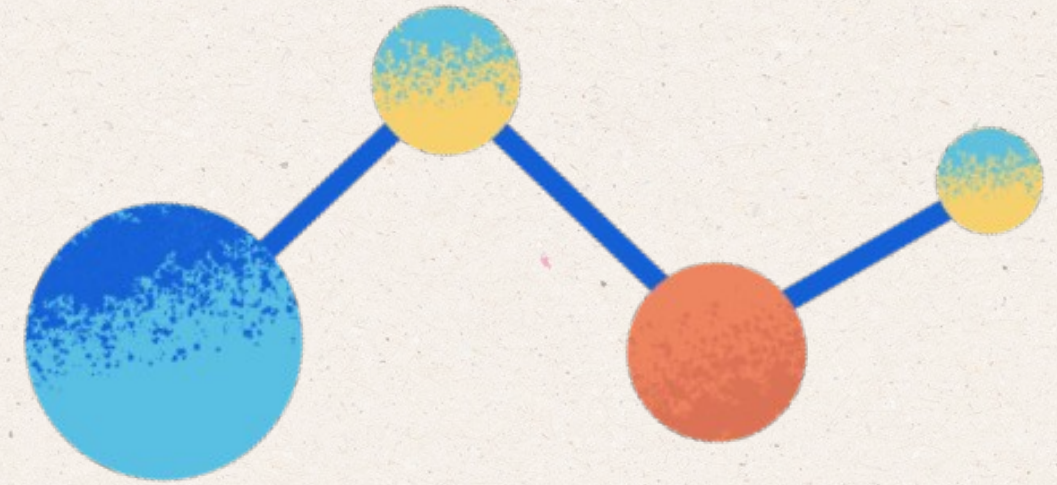
## PROBLEM RESOLUTION

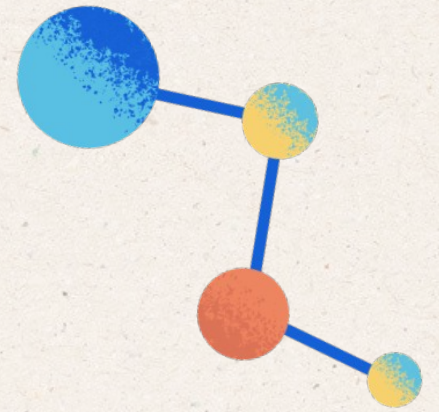
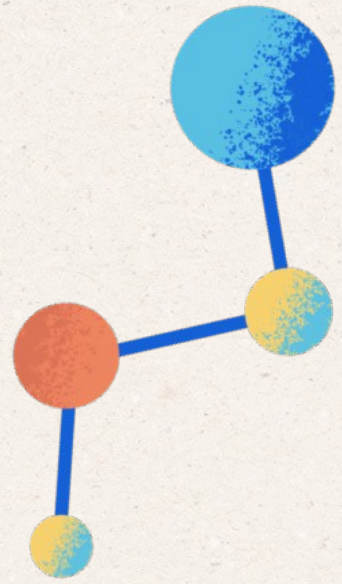
Lorem ipsum dolor sit amet, consectetur adipiscing elit, sed do eiusmod tempor incididunt ut labore et dolore magna aliqua. Ut enim ad minim veniam, quis nostrud exercitation ullamco laboris nisi ut aliquip ex ea commodo consequat.



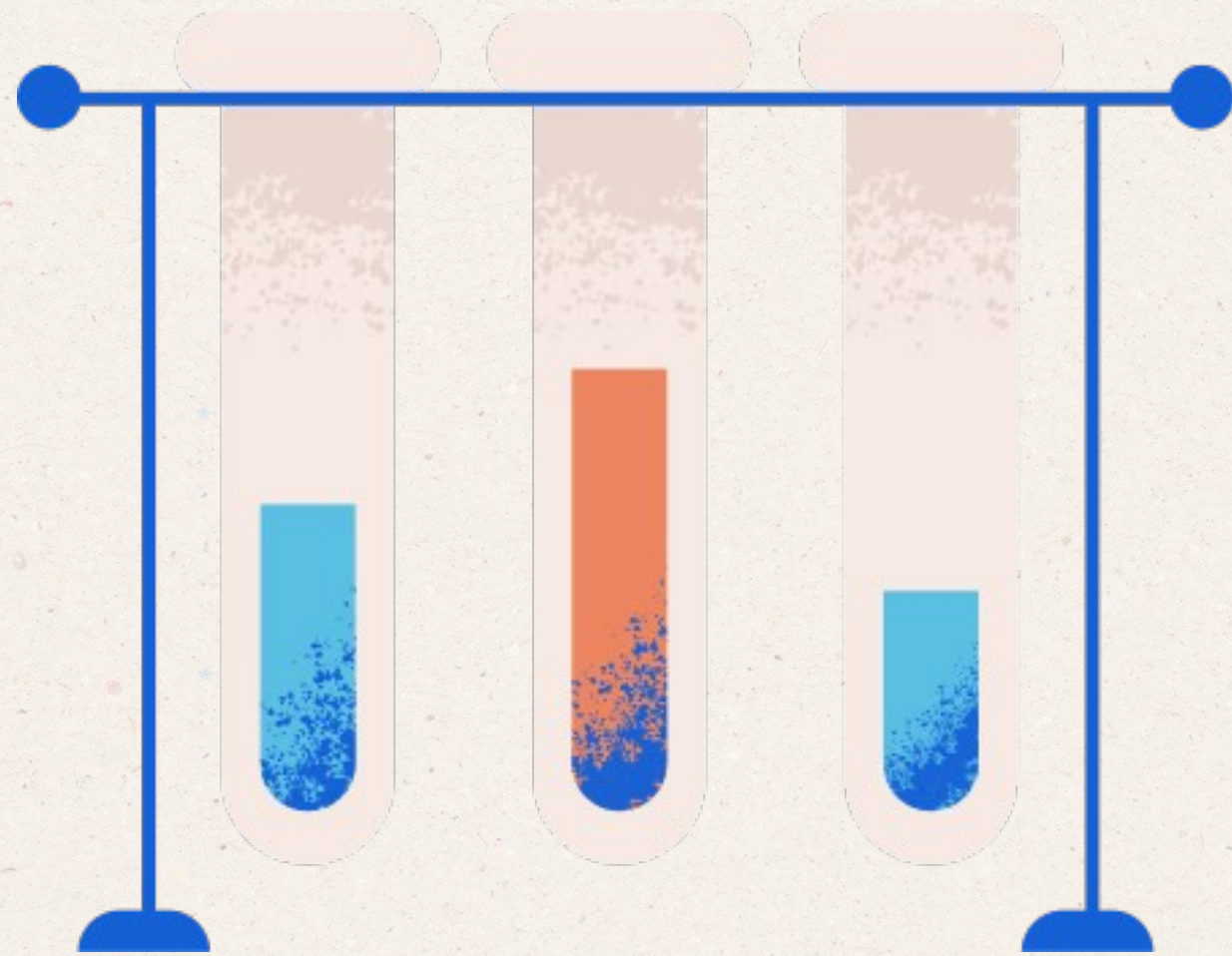
03

# CHEMICAL ANALYSIS





# THE TECHNIQUES



The following techniques and materials have been used for the project.

---

---

---

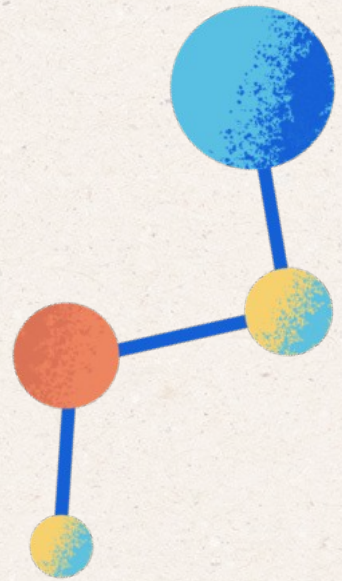
---

---

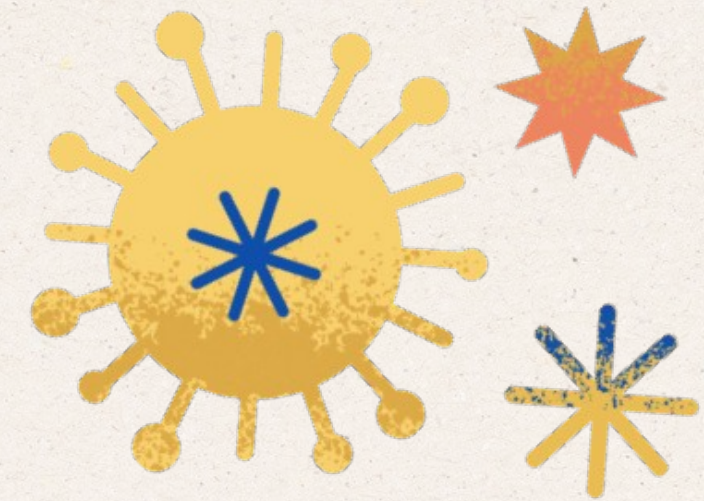
---

---

---



# ANALYSIS

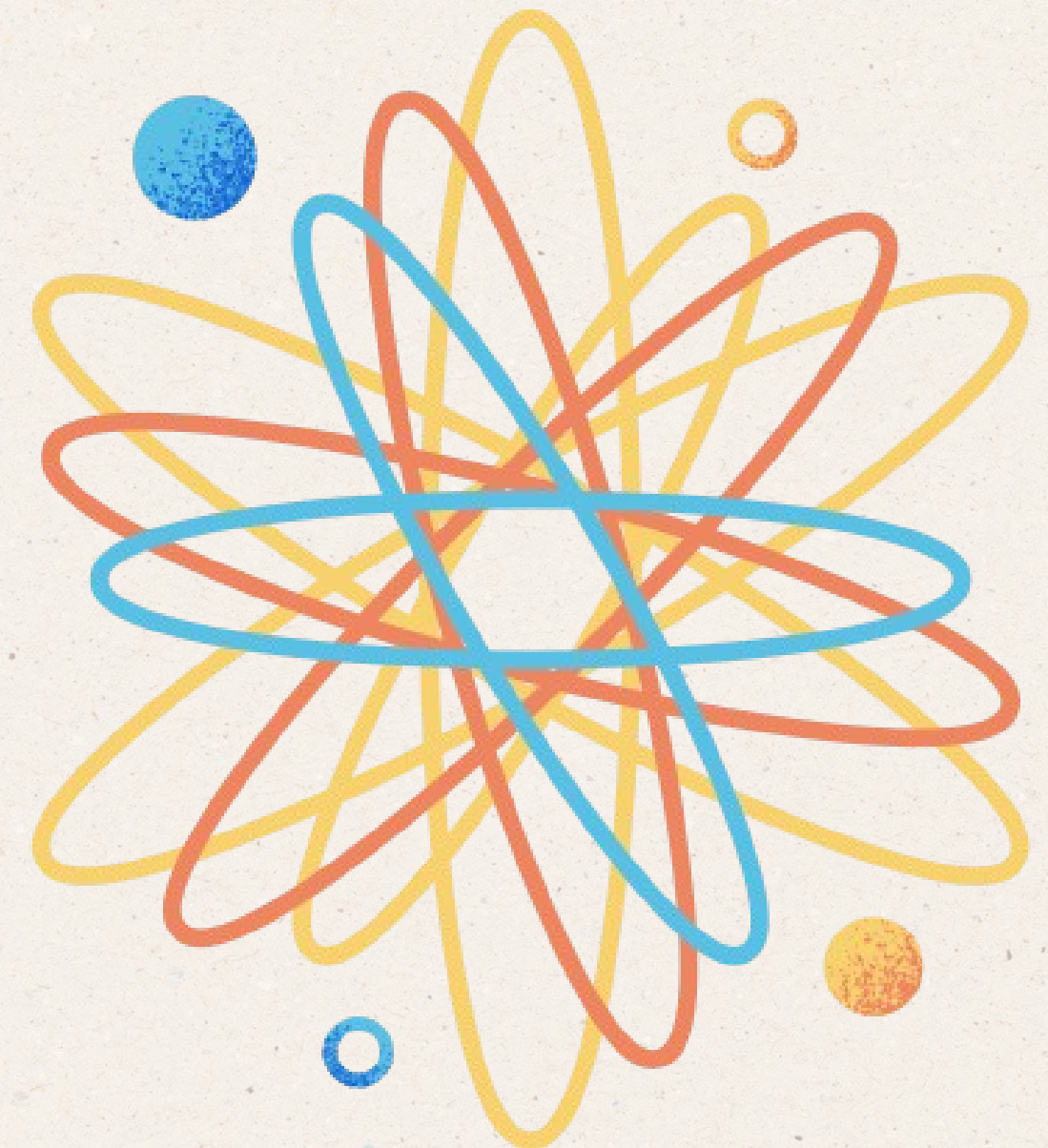


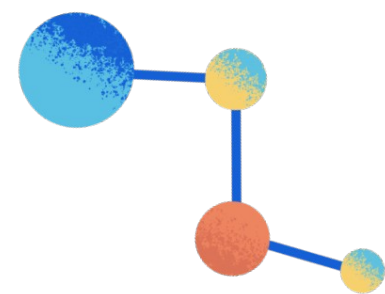
## BIOLOGY

Lorem ipsum dolor sit amet, consectetur adipiscing elit, sed do eiusmod tempor incididunt ut labore et dolore magna aliqua. Ut enim ad minim veniam, quis nostrud exercitation ullamco laboris nisi ut aliquip ex ea commodo consequat.

## RESEARCH

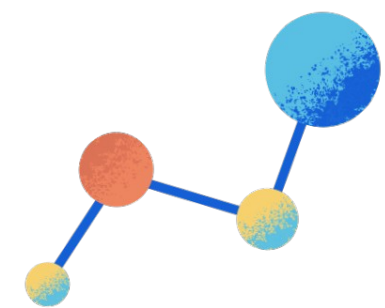
Lorem ipsum dolor sit amet, consectetur adipiscing elit, sed do eiusmod tempor incididunt ut labore et dolore magna aliqua. Ut enim ad minim veniam, quis nostrud exercitation ullamco laboris nisi ut aliquip ex ea commodo consequat.





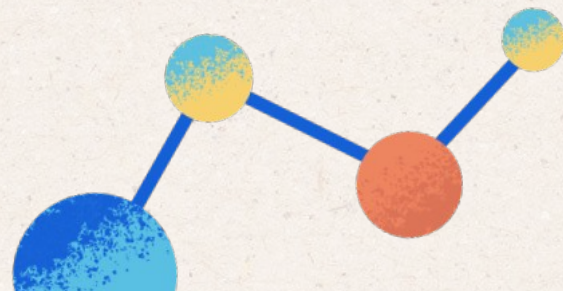
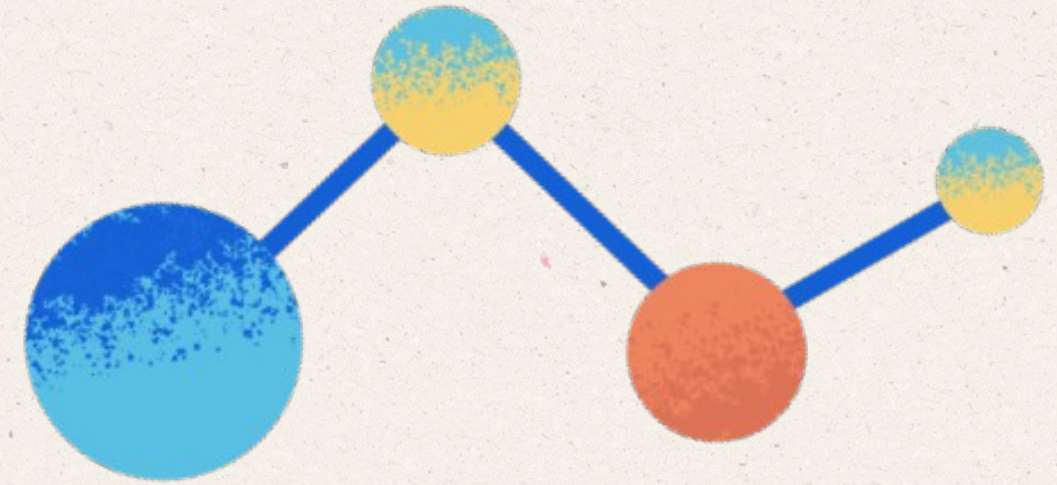
# LAB PICTURE

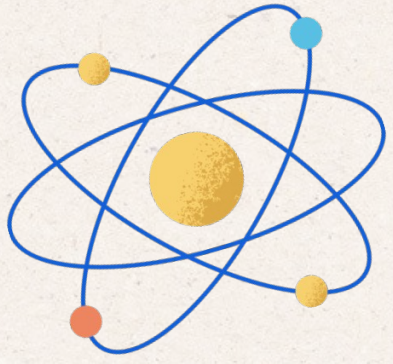
Images help us understand the theory.



04

GENERAL  
CONCLUSIONS





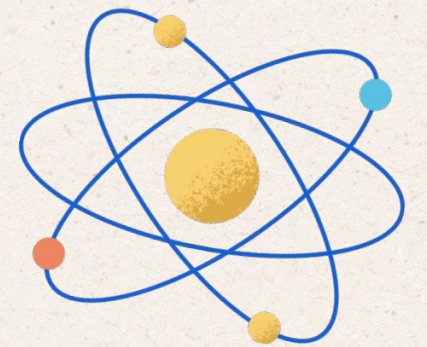
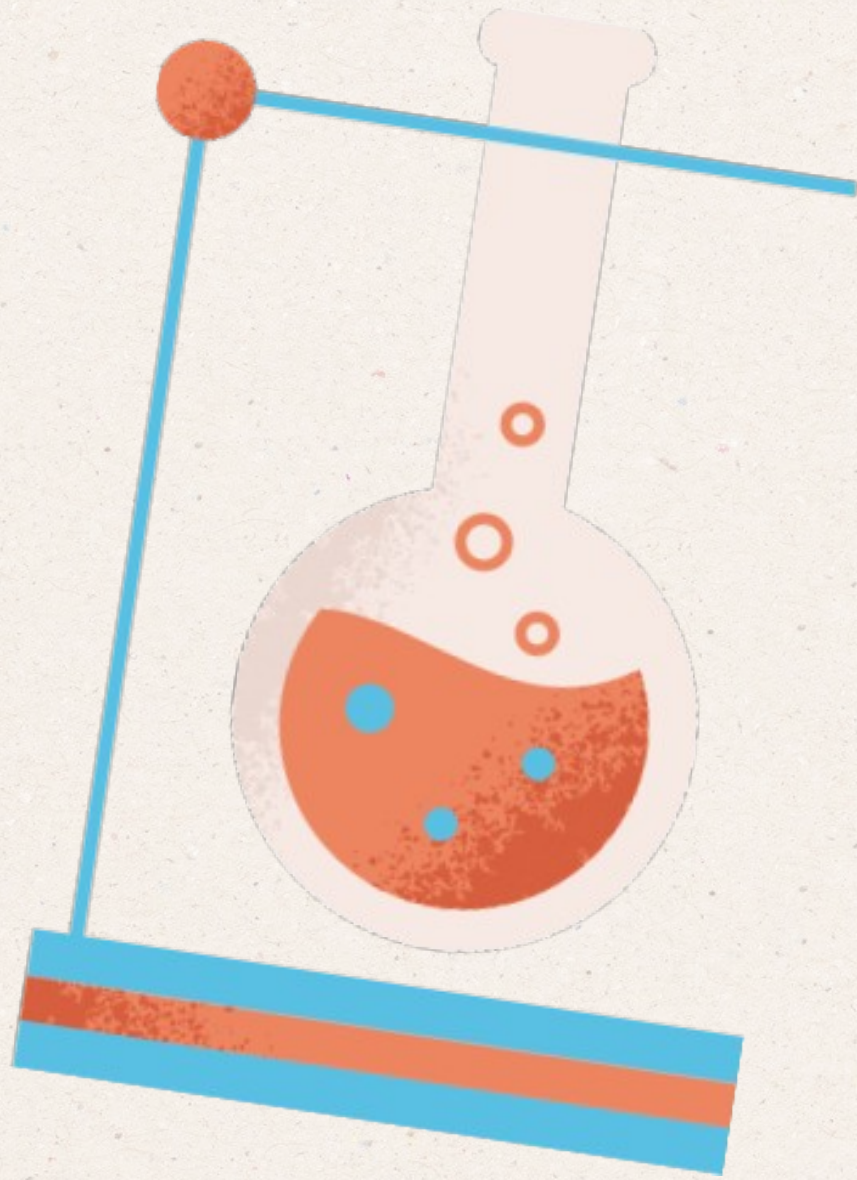
# CONCLUSIONS

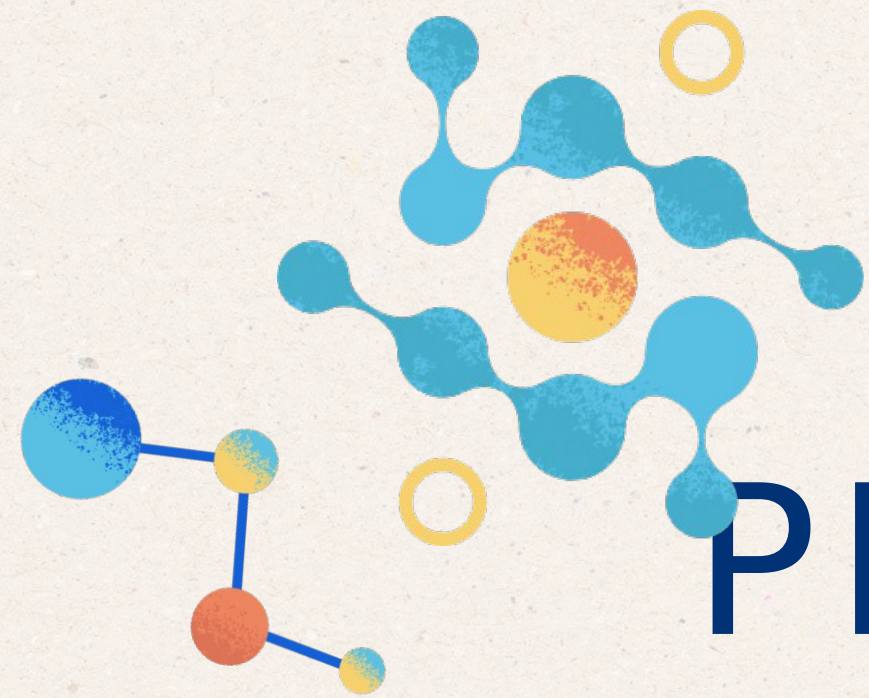
Lorem ipsum dolor sit amet, consectetur adipiscing elit, sed do eiusmod tempor incididunt ut labore et dolore magna aliqua.

Ut enim ad minim veniam, quis nostrud exercitation ullamco laboris nisi ut aliquip ex ea commodo consequat.

Lorem ipsum dolor sit amet, consectetur adipiscing elit, sed do eiusmod tempor incididunt ut labore et dolore magna aliqua.

Ut enim ad minim veniam, quis nostrud exercitation ullamco laboris nisi ut aliquip ex ea commodo consequat.





# PROJECT SUMMARY

## THEORY

Lorem ipsum dolor sit amet, consectetur adipiscing elit, sed do eiusmod tempor incididunt ut labore et dolore magna aliqua. Ut enim ad minim veniam, quis nostrud exercitation ullamco laboris nisi ut aliquip ex ea commodo consequat.

## PRACTICE

Lorem ipsum dolor sit amet, consectetur adipiscing elit, sed do eiusmod tempor incididunt ut labore et dolore magna aliqua. Ut enim ad minim veniam, quis nostrud exercitation ullamco laboris nisi ut aliquip ex ea commodo consequat.

## CONCLUSION

Lorem ipsum dolor sit amet, consectetur adipiscing elit, sed do eiusmod tempor incididunt ut labore et dolore magna aliqua. Ut enim ad minim veniam, quis nostrud exercitation ullamco laboris nisi ut aliquip ex ea commodo consequat.



The image features several decorative molecular structures scattered around the central text. Each structure consists of three or four spheres connected by blue lines. The spheres are colored in shades of blue, orange, and yellow. The structures are positioned in the top-left, top-right, middle-left, middle-right, and bottom-left areas of the page.

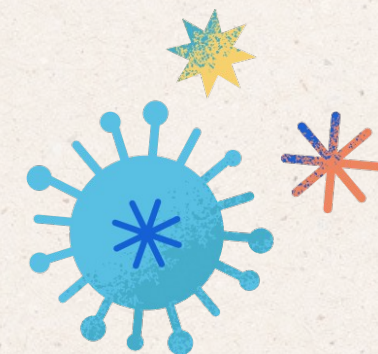
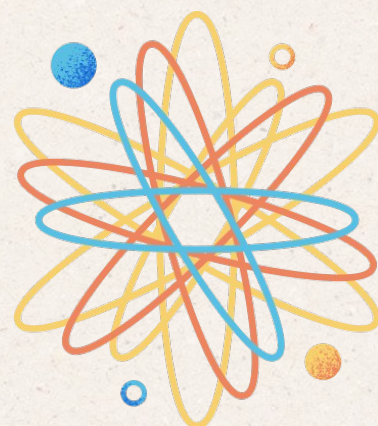
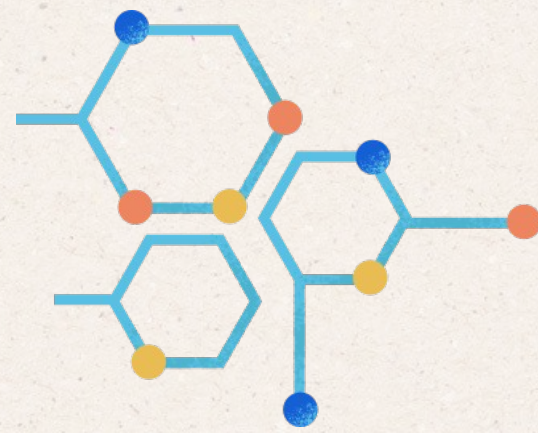
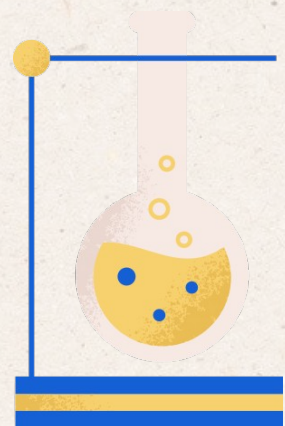
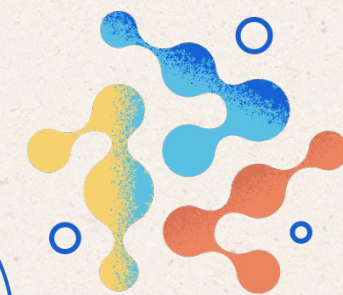
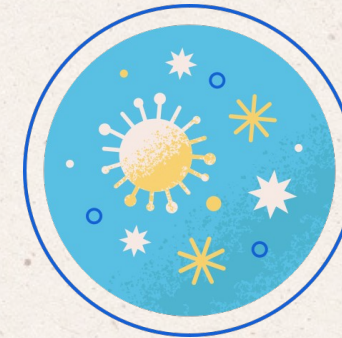
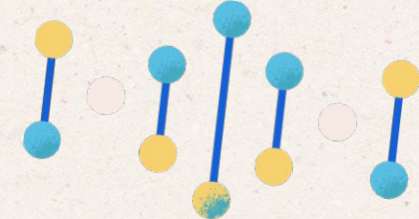
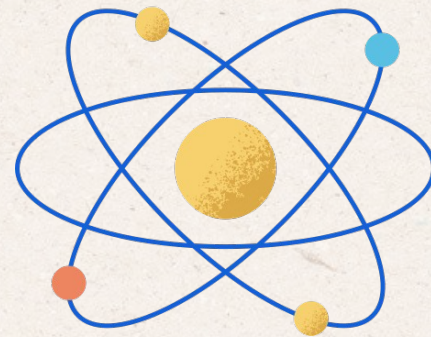
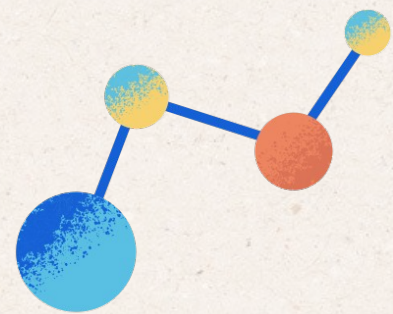
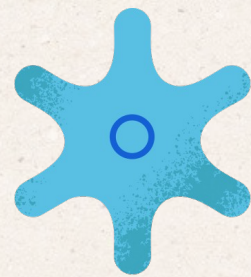
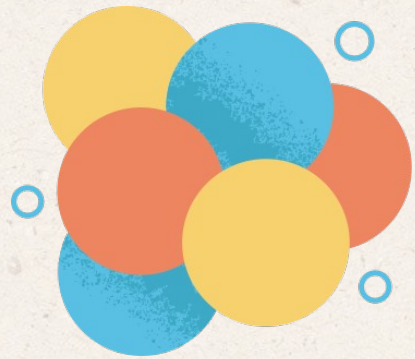
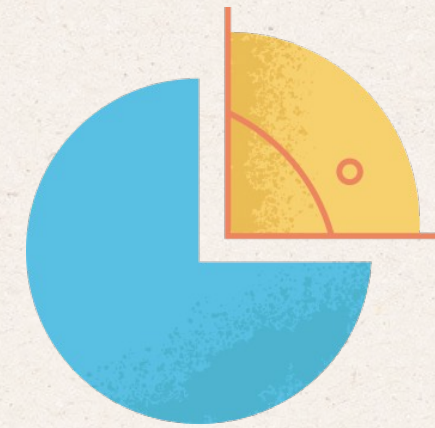
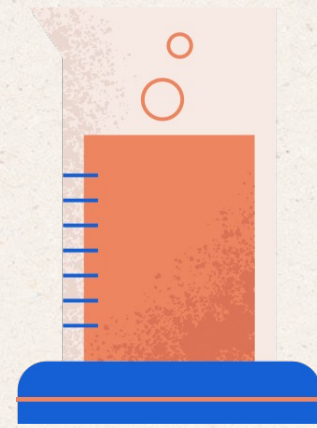
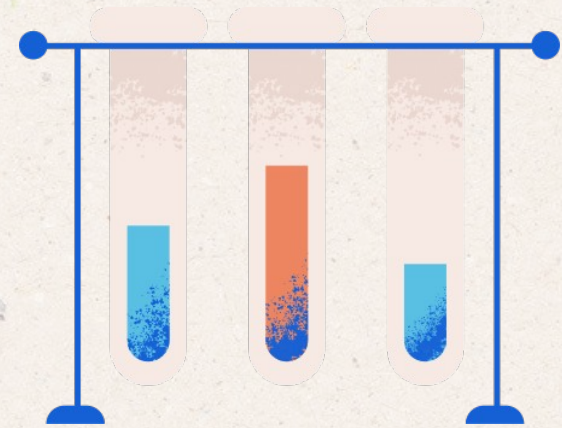
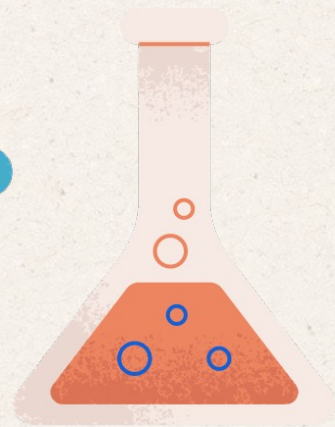
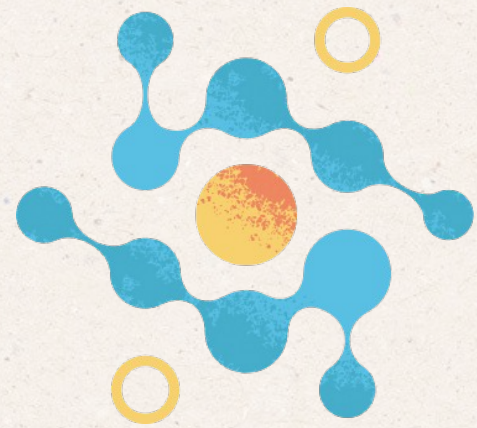
# THANK

Any questions? Don't hesitate to  
ask for our help!

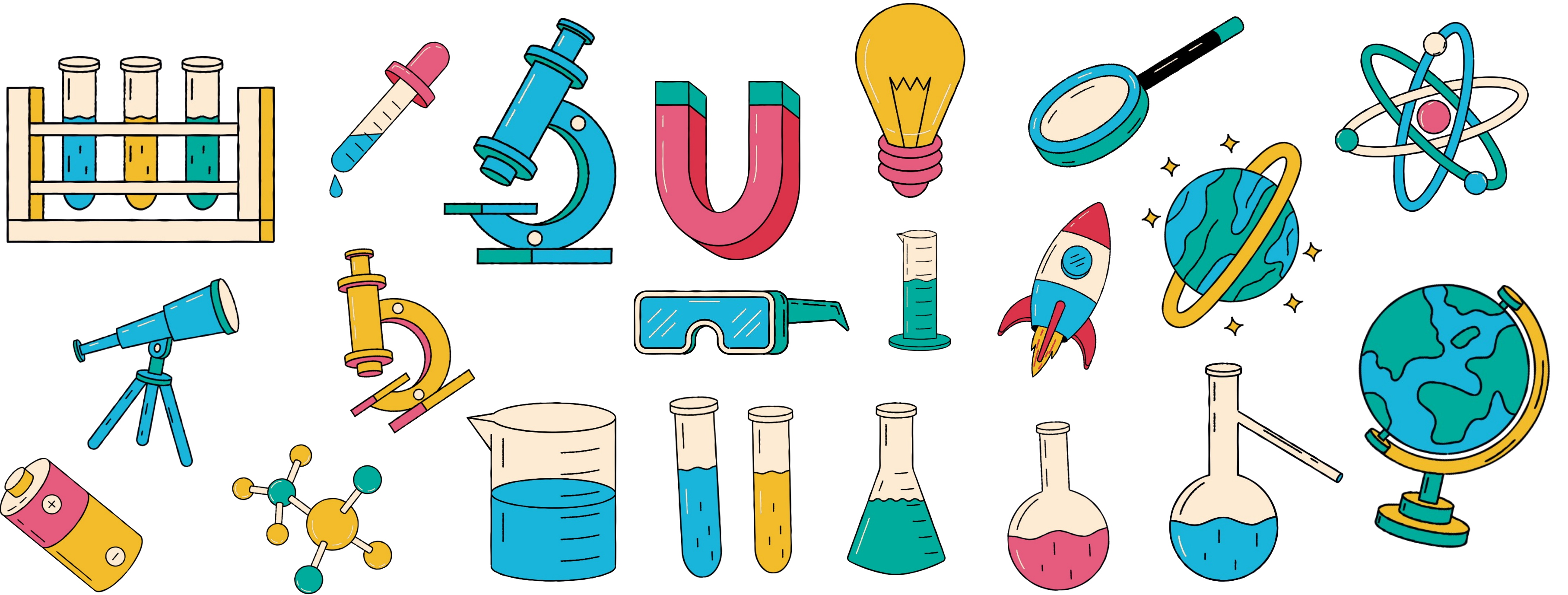
# YOU!

[www.reallygreatsite.com](http://www.reallygreatsite.com)

# ILLUSTRATIONS



# ILLUSTRATIONS



# SCIENCE PROJECT

LARANA COMPANY



# PROJECT RULES

## BASIC RULES

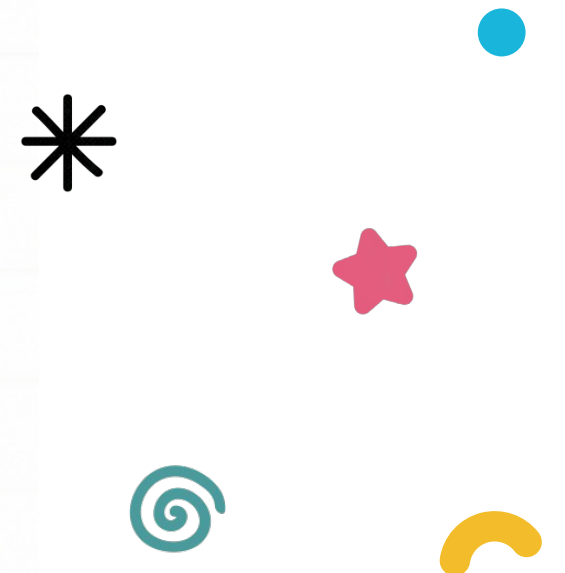
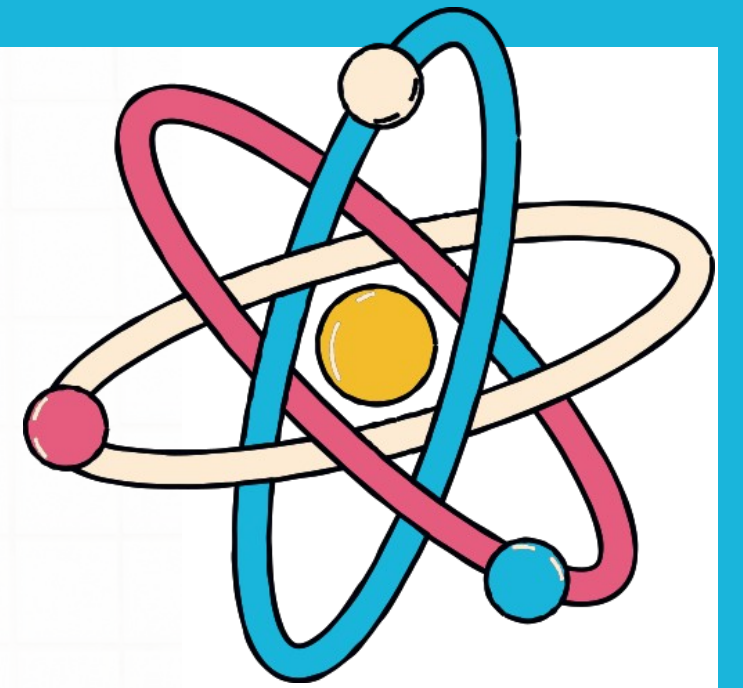
**Lorem ipsum dolor sit amet, consectetur adipiscing elit, sed do eiusmod tempor incididunt ut labore et dolore magna aliqua. Ut enim ad minim veniam, quis nostrud exercitation ullamco laboris nisi ut aliquip ex ea commodo consequat.**

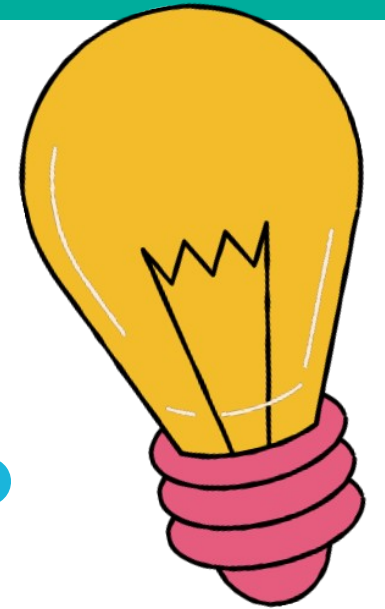
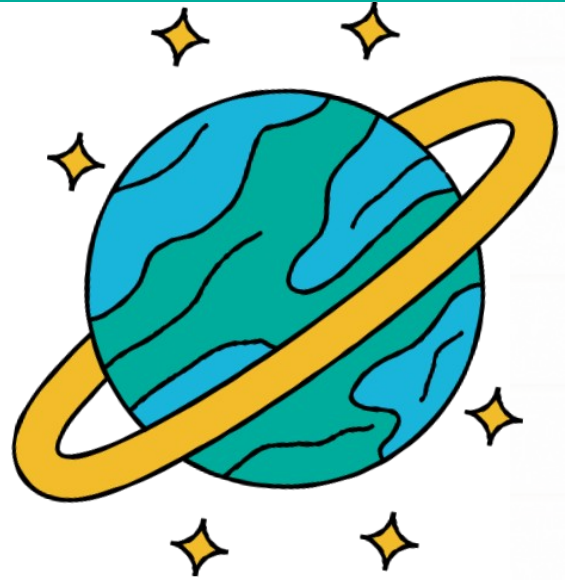
## POSSIBLE INCIDENTS

**Lorem ipsum dolor sit amet, consectetur adipiscing elit, sed do eiusmod tempor incididunt ut labore et dolore magna aliqua. Ut enim ad minim veniam, quis nostrud exercitation ullamco laboris nisi ut aliquip ex ea commodo consequat.**

## PROBLEM RESOLUTION

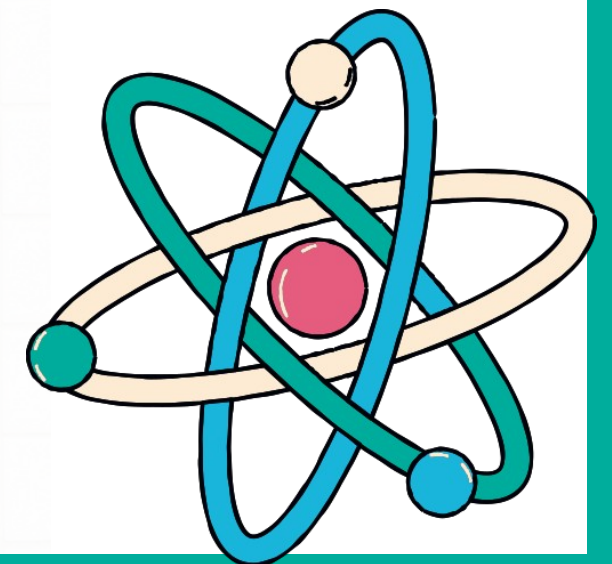
**Lorem ipsum dolor sit amet, consectetur adipiscing elit, sed do eiusmod tempor incididunt ut labore et dolore magna aliqua. Ut enim ad minim veniam, quis nostrud exercitation ullamco laboris nisi ut aliquip ex ea commodo consequat.**



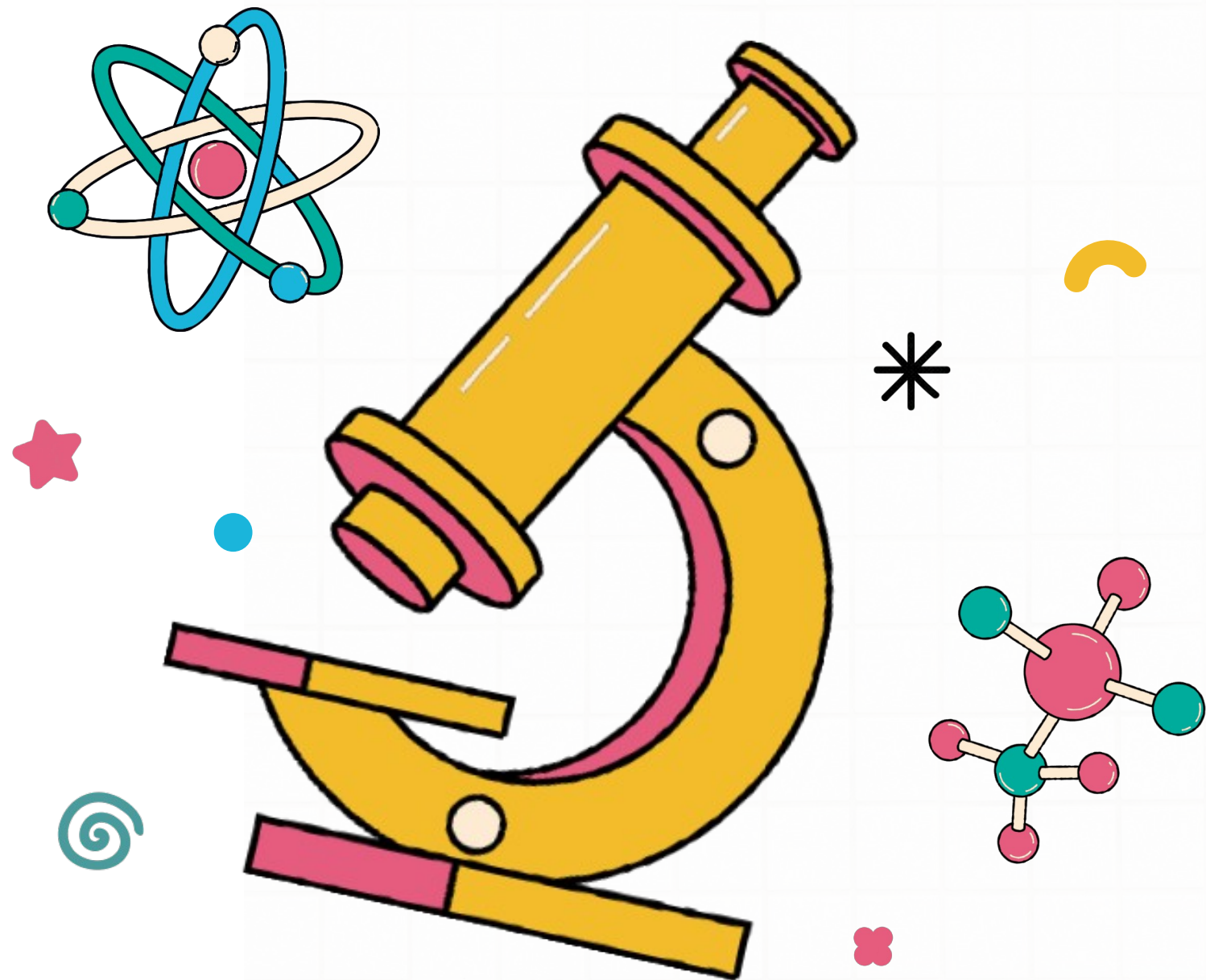


# INTRODUCTION

**Lorem ipsum dolor sit amet, consectetur adipiscing elit, sed do eiusmod tempor incididunt ut labore et dolore magna aliqua. Ut enim ad minim veniam, quis nostrud exercitation ullamco laboris nisi ut aliquip ex ea commodo consequat. Duis aute irure dolor in reprehenderit in voluptate velit esse cillum dolore eu fugiat nulla pariatur.**



# THE TECHNIQUES



**The following techniques and materials have been used for the project.**

---

---

---

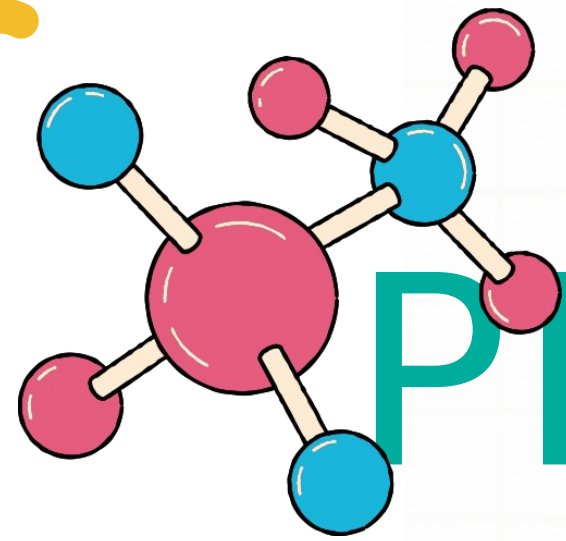
---

---

---

---

---



# PROJECT SUMMARY



## THEORY

**Lorem ipsum dolor sit amet, consectetur adipiscing elit, sed do eiusmod tempor incididunt ut labore et dolore magna aliqua. Ut enim ad minim veniam, quis nostrud exercitation ullamco laboris nisi ut aliquip ex ea commodo**

## PRACTICE

**Lorem ipsum dolor sit amet, consectetur adipiscing elit, sed do eiusmod tempor incididunt ut labore et dolore magna aliqua. Ut enim ad minim veniam, quis nostrud exercitation ullamco laboris nisi ut aliquip ex ea commodo**

## CONCLUSION

**Lorem ipsum dolor sit amet, consectetur adipiscing elit, sed do eiusmod tempor incididunt ut labore et dolore magna aliqua. Ut enim ad minim veniam, quis nostrud exercitation ullamco laboris nisi ut aliquip ex ea commodo**